

# BLOCK 7 FIVE ACRE PLAT A

TAXING UNIT 25

PART OF LOTS 23 & 24

PREFIX 03-019

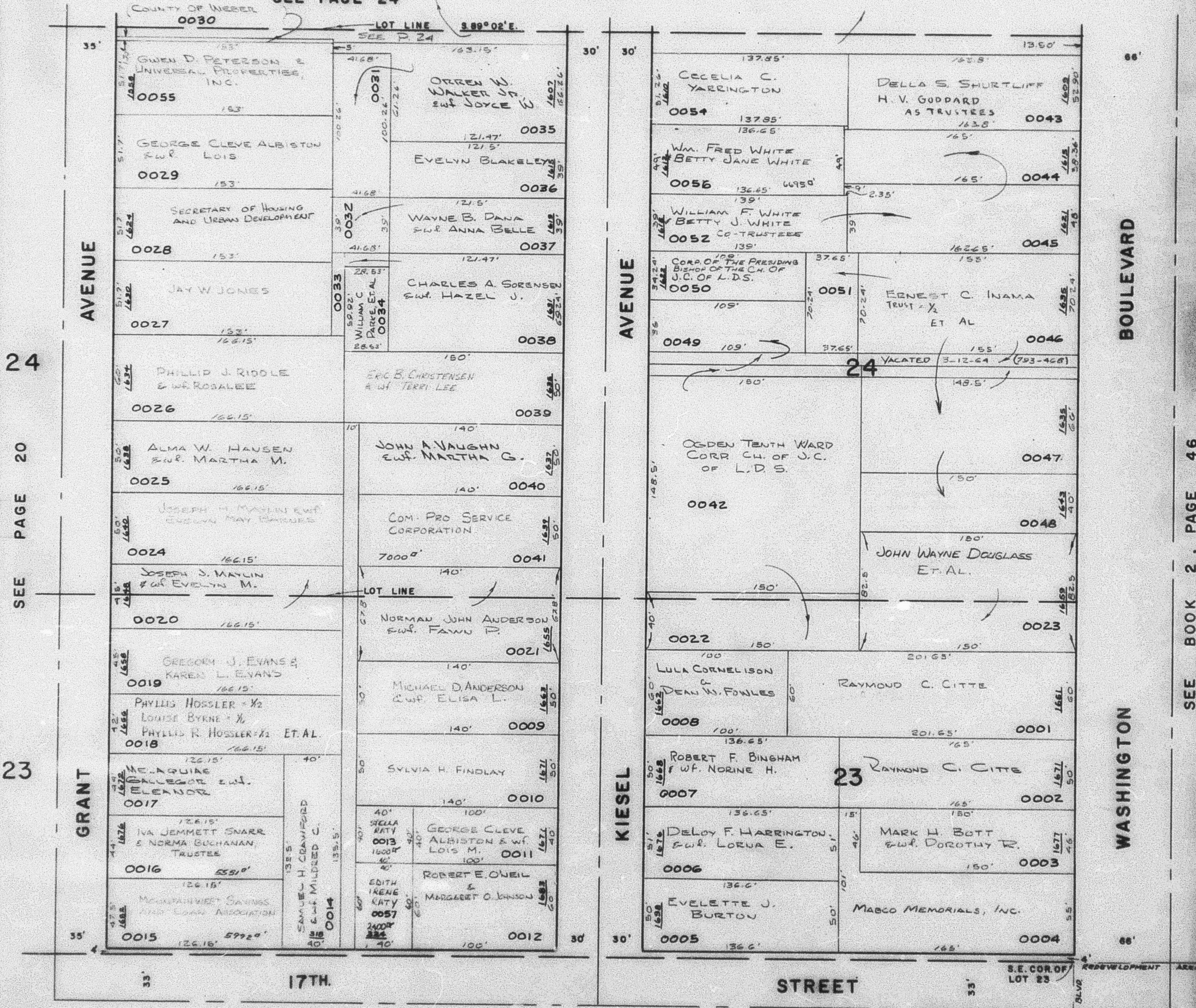
IN OGDEN CITY

SCALE 1" = 50'

SEE PAGE 24

COUNTY OF WEBER  
0030

LOT LINE 3.89°02'E



SEE PAGE 17

24  
20  
23

AVENUE  
GRANT

AVENUE  
KIESEL

BOULEVARD  
WASHINGTON

SEE BOOK 2, PAGE 46